

# LIGHT

GENERAL CATALOGUE

# LIGHTING TOWERS

PRO



## CUBE PRO

- Height: 8.1 m
- 4x240W G4 LED
- Adjustable light power
- Hydraulic lifting system
- Battery mode: up to 19 hours
- Generator mode: up to 275 hours
- Hybrid mode: up to 785 hours
- MPnano digital controller
- 2-cyl. engine
- Illumination: up to 3100 m<sup>2</sup>



## V20 PRO

- Height: 8.2 m
- 4x240W G4 LED
- Adjustable light power
- Hydraulic lifting system
- Battery mode: up to 19 hours
- Generator mode: up to 165 hours
- Hybrid mode: up to 471 hours
- MPnano digital controller
- 2-cyl. engine
- Illumination: up to 3100 m<sup>2</sup>

HYBRID

ELECTRIC



## CUBE Next

- Height: 8.4 m
- 4x150W or 4x300W LED
- Adjustable light power
- Hydraulic lifting system
- Running time: up to 112 hours
- Total accessibility
- 100% battery system
- Illumination: up to 4200 m<sup>2</sup>



## VT-Solar

- Height: 6.5 m
- 4x100W G4 LED
- Manual lifting system
- 3x300W solar panels
- Site or road trailer
- Running time: up to 10 hours
- Rechargeable batteries
- Illumination: 2100 m<sup>2</sup>

DIESEL



## V20

- Height: 8.5 m
- 4x320W G4 LED
- Hydraulic lifting system
- GTL01 digital controller
- Site or road trailer
- 2-cyl. engine
- Illumination: 4500 m<sup>2</sup>



## V20 Hyper

- Height: 8.5 m
- 4x320W Hyper LED
- Hydraulic lifting system
- GTL01 digital controller
- Site or road trailer
- 2-cyl. engine
- Illumination: 4500 m<sup>2</sup>



## MT1

- Height: 5.3 m
- 4x240W G4 LED
- Option: 1x400W UFO LED
- Manual lifting system
- Hand trolley or road trailer
- Extremely compact design
- 1-cyl. engine
- Illumination 4x240W: 2500 m<sup>2</sup>
- Illumination 1x400W: 850 m<sup>2</sup>



## MT2

- Height: 5.2 m
- 4x240W G4 LED
- Manual lifting system
- Hand trolley
- Extremely compact design
- 1-cyl. engine
- Illumination: 2500 m<sup>2</sup>



## CUBE Super

- Height: 8.4 m
- 4x320W G4 LED
- Hydraulic lifting system
- GTL01 digital controller
- Total accessibility
- 2-cyl. engine
- Illumination: 4500 m<sup>2</sup>



## CUBE Hyper

- Height: 8.4 m
- 4x320W Hyper LED
- Hydraulic lifting system
- GTL01 digital controller
- Total accessibility
- 2-cyl. engine
- Illumination: 4500 m<sup>2</sup>





### CUBE Hybrid

- Height: 8 m
- 4x120W G4 LED
- Option: 4x120W Hyper LED
- Hydraulic lifting system
- Running time: 403 hours
- MPnano digital controller
- Total accessibility
- 1-cyl. engine
- Illumination: 2500 m<sup>2</sup>



### Hydro Power Box Hybrid

- Height: 8.3 m
- 4x120W G4 LED
- Option: 4x120W Hyper LED
- Hydraulic lifting system
- Running time: 541 hours
- MPnano digital controller
- Vandalism-proof for events
- Total accessibility
- 1-cyl. engine
- Illumination: 2500 m<sup>2</sup>



### VT-Hybrid

- Height: 8.5 m
- 4x120W G4 LED
- Option: 4x120W Hyper LED
- Hydraulic lifting system
- Running time: 665 hours
- MPnano digital controller
- Site or road trailer
- 1-cyl. engine
- Illumination: 2500 m<sup>2</sup>



### Linktower

- Height: 6.7 m
- 4x240W G4 LED
- Option: 1x400W UFO LED
- Manual lifting system
- Hand trolley
- Without engine
- Linkable in series
- Illumination 4x240W: 2800 m<sup>2</sup>
- Illumination 1x400W: 1000 m<sup>2</sup>



### CTF 10

- Height: 10 m
- 4x240W G4 LED
- Option: 4x320W LED
- Manual lifting system
- Extremely compact design
- Without engine
- Illumination 4x240W: 3800 m<sup>2</sup>
- Illumination 4x320W: 5000 m<sup>2</sup>

### iQ20

- Height: 8.5 m
- 4x240W or 4x320W G4 LED
- Hydraulic lifting system
- GTL01 digital controller
- Site or road trailer
- 1-cyl. engine
- Illumination 4x240W: 3200 m<sup>2</sup>
- Illumination 4x320W: 4500 m<sup>2</sup>



### VT-Mine

- Height: 8.5 m
- 6x320W LED
- Hydraulic lifting system
- GTL02 digital controller
- Special for mining sector
- Site or road trailer
- 3-cyl. engine
- Illumination: 5200 m<sup>2</sup>



### VMAX

- Height: 8 m
- 6x320W LED
- Manual lifting system
- Reinforced frame
- Liquid containment tank
- Site or road trailer
- 3-cyl. engine
- Illumination: 5200 m<sup>2</sup>

### VTevo

- Height: 8 m
- 4x320W G4 LED
- Manual lifting system
- Compact design
- Site or road trailer
- 1 or 2-cyl. engine
- Illumination: 4500 m<sup>2</sup>



### VTevQ

- Height: 7.5 m
- 4x320W G4 LED
- Manual lifting system
- GTL01 digital controller
- Compact design
- 2-cyl. engine
- Illumination: 4500 m<sup>2</sup>



### VT8

- Height: 8 m
- 4x1000W MH
- Manual lifting system
- Site or road trailer
- 3-cyl. engine
- Illumination: 4200 m<sup>2</sup>

### Hydro Power Box 360 - Hyper

- Height: 8.4 m
- 4x320W Hyper LED
- Hydraulic lifting system
- GTL01 digital controller
- Vandalism-proof for events
- Total accessibility
- 2-cyl. engine
- Illumination: 4500 m<sup>2</sup>

# CUBE PRO

CUBE PRO is not just a new lighting tower, but the real and only "ALL IN ONE" product! It embodies all the innovations and new technologies that Generac Mobile® has developed in over 20 years at the top of the industry as manufacturer. We have brought together all the Rental needs, in one single product.



**G4**  
240

**NEW**



### GENERAC® G4 LED

High efficiency LED floodlights designed by Generac Mobile®. Special version with adjustable light power output.

### ALL IN ONE

PRO is the only lighting tower technology to offer altogether:

- 1) the **future**, with 100% battery-powered supply;
- 2) the **present**, with the latest generation hybrid power supply;
- 3) the **tradition**, with low consumption diesel engine.

All in one model.

• **Engine note:** both EU Stage V and unregulated version available.

## CUBE PRO

Min. dimensions (mm)	Length x Width x Height	1230 x 1150 x 2383			
Max. dimensions (mm)	Length x Width x Height	1793 x 1737 x 8100			
Dry weight (kg)		1175			
Engine model		Kubota Z482			
Avg. sound pressure	dB(A) @ 7m	0 - 58			
Dimmer switch		25%	50%	75%	100%
Max. lamps power (W)		4 x 60	4 x 120	4 x 180	4 x 240
Lamps type		LED	LED	LED	LED
Max. total lumen (Lm)		41040	76184	107668	139200
Max. illuminated area* (m <sup>2</sup> )		1500	2200	2700	3100
Battery recharging time (h)		6:11	5:18	5:09	4:29
Running time - Battery mode (h)		19:46	10:07	5:11	3:45
Running time - Generator mode (h)		275	252	224	208
Running time - Hybrid mode (h)		785	504	337	300
Lifting system		H			
Mast rotation (°)		340			
Wind speed resistance (km/h)		110			
Alternator	kVA/V/Hz	5/220/50 - 5/240/60			
CEE 16A inlet plug (external power)	√: Yes / ●: No	√			
Multipin inlet plug (solar kit)	√: Yes / ●: No	√			
Tank capacity (liters)		160 (150 net)			
Liquid containment tank (110%)	√: Yes / ●: No	√			

# V20 PRO

V20 PRO is not just a new lighting tower, but the real and only "ALL IN ONE" product! It embodies all the innovations and new technologies that Generac Mobile® has developed in over 20 years at the top of the industry as manufacturer. We have brought together all the Rental needs, in one single product.

**G4**  
240



### GENERAC® G4 LED

High efficiency LED floodlights designed by Generac Mobile®. Special version with adjustable light power output.



### ALL IN ONE

PRO is the only lighting tower technology to offer altogether:

- 1) the **future**, with 100% battery-powered supply;
- 2) the **present**, with the latest generation hybrid power supply;
- 3) the **tradition**, with low consumption diesel engine.

All in one model.

• **Engine note:** both EU Stage V and unregulated version available.

## V20 PRO

Min. dimensions* (mm)	Length x Width x Height	2245 x 1431 x 2424			
Max. dimensions* (mm)	Length x Width x Height	3390 x 1714 x 8200			
Dry weight* (kg)		1146			
Engine model		Kubota Z482			
Avg. sound pressure	dB(A) @ 7m	0 - 58			
Dimmer switch		25%	50%	75%	100%
Max. lamps power (W)		4 x 60	4 x 120	4 x 180	4 x 240
Lamps type		LED	LED	LED	LED
Max. total lumen (Lm)		41040	76184	107668	139200
Max. illuminated area* (m <sup>2</sup> )		1500	2200	2700	3100
Battery recharging time (h)		6:11	5:18	5:09	4:29
Running time - Battery mode (h)		19:46	10:07	5:11	3:45
Running time - Generator mode (h)		165	151	134	125
Running time - Hybrid mode (h)		471	303	202	180
Lifting system		H			
Mast rotation (°)		340			
Wind speed resistance (km/h)		110			
Alternator	kVA/V/Hz	5/220/50 - 5/240/60			
CEE 16A inlet plug (external power)	√: Yes / ●: No	√			
Multipin inlet plug (solar kit)	√: Yes / ●: No	√			
Tank capacity (liters)		100 (90 net)			
Liquid containment tank (110%)	√: Yes / ●: No	√			

\*Values refer to version with adjustable road trailer

# CUBE HYBRID

The CUBE Hybrid is equipped with an hybrid powering system. The extreme compactness and the new special features make this model ideal to be used during events or areas with low noise or carbon dioxide emission requirements.



### OPTIONAL HYPER LED

CUBE Hybrid can be equipped with optional Hyper LED floodlights, placed on special brackets to point them in every direction.

### BATTERY PACK

The CUBE Hybrid is equipped with a special battery pack able to power the LED floodlights in total absence of noise and carbon emissions. Once the battery is low, the backup generator automatically starts and powers the floodlights while recharging the battery. This model can be powered also by and external power source.

**Engine note:** both EU Stage V and unregulated version available.

CUBE Hybrid

TECHNICAL DATA		CUBE Hybrid	
Min. dimensions (mm)	Length x Width x Height	1230 x 1160 x 2405	
Max. dimensions (mm)	Length x Width x Height	1790 x 1735 x 8400	
Dry weight (kg)		1100	
Engine models available		Yanmar L70N	
Avg. sound pressure	dB(A) @ 7m	0 - 66	
Battery recharging time (h)		6:15	
Battery running time (h)		8	
Total running time (h)		342	
Lifting system	M:Manual / H:Hydraulic	H	
Mast rotation (°)		340	
Wind speed resistance (km/h)		110	
Lamps power (W)		4 x 120	4 x 120
Lamps type		G4 LED	Hyper LED
Total lumen (Lm)		69600	67200
Illuminated area (m <sup>2</sup> )		2500	2500
Alternator	kVA/V/Hz	5/220/50 - 5/240/60	
Inlet plug	A/V/Hz	16/220/50 - 16/240/60	
Tank capacity (liters)		170	
Liquid containment tank (110%)	√:Yes / ●:No	√	

# HYDRO POWER BOX HYBRID

The Hydro Power Box is now available in the innovative hybrid configuration! Thanks to its high safety features, the Hydro Power Box Hybrid is an ideal lighting tower for illuminating live events like concerts and sport matches, even placed near the public.



## OPTIONAL HYPER LED

HPB Hybrid can be equipped with optional Hyper LED floodlights, placed on special brackets to point them in every direction.

## BATTERY PACK

The HPB Hybrid is equipped with a special battery pack able to power the LED floodlights in total absence of noise and carbon emissions. Once the battery is low, the backup generator automatically starts and powers the floodlights while recharging the battery. This model can be powered also by and external power source.

**Engine note:** both EU Stage V and unregulated version available.

### HPB Hybrid

TECHNICAL DATA			
Min. dimensions (mm)	Length x Width x Height	1150 x 1150 x 2534	
Max. dimensions (mm)	Length x Width x Height	1150 x 1150 x 8300	
Dry weight (kg)		1225	
Engine models available		Yanmar L70N	
Avg. sound pressure	dB(A) @ 7m	0 - 66	
Battery recharging time (h)		6:15	
Battery running time (h)		8	
Total running time (h)		527	
Lifting system	M:Manual / H:Hydraulic	H	
Mast rotation (°)		340	
Wind speed resistance (km/h)		80	
Lamps power (W)		4 x 120	4 x 120
Lamps type		G4 LED	Hyper LED
Total lumen (Lm)		69600	67200
Illuminated area (m <sup>2</sup> )		2500	2500
Alternator	kVA/V/Hz	5/220/50 - 5/240/60	
Inlet plug	A/V/Hz	16/220/50 - 16/240/60	
Tank capacity (liters)		265	
Liquid containment tank (110%)	√:Yes / ●:No	√	

# VT-HYBRID

The VT-Hybrid is the first hybrid lighting tower in the world. It is equipped with high efficiency LED floodlights powered by a rechargeable battery pack. This light tower guarantees a great reliability and a perfect sustainability. Mobile version with site-tow or road trailer.



### OPTIONAL HYPER LED

VT-Hybrid can be equipped with optional Hyper LED floodlights, placed on special brackets to point them in every direction.

### BATTERY PACK

The VT-Hybrid is equipped with a special battery pack able to power the LED floodlights in total absence of noise and carbon emissions. Once the battery is low, the backup generator automatically starts and powers the floodlights while recharging the battery. This model can be powered also by and external power source.

**Engine note:** both EU Stage V and unregulated version available.

### VT-Hybrid

TECHNICAL DATA			
Min. dimensions (mm)	Length x Width x Height	3040 x 1400 x 2500	
Max. dimensions (mm)	Length x Width x Height	3040 x 2100 x 8500	
Dry weight (kg)		1130	
Engine models available		Yanmar L70N	
Avg. sound pressure	dB(A) @ 7m	0 - 66	
Battery recharging time (h)		6:15	
Battery running time (h)		8	
Total running time (h)		665	
Lifting system	M:Manual / H:Hydraulic	H	
Mast rotation (°)		340	
Wind speed resistance (km/h)		110	
Lamps power (W)		4 x 120	4 x 120
Lamps type		G4 LED	Hyper LED
Total lumen (Lm)		69600	67200
Illuminated area (m <sup>2</sup> )		2500	2500
Alternator	kVA/V/Hz	5/220/50 - 5/240/60	
Inlet plug	A/V/Hz	16/220/50 - 16/240/60	
Tank capacity (liters)		160	
Liquid containment tank (110%)	√:Yes / ●:No	√	



# CUBE NEXT

The CUBE Next is a new battery powered lighting tower that has been designed to attain the highest levels of performance and safety with total respect for the environment. Providing the longest range in battery powered lighting towers we have set the standard in our industry.



## GENERAC® LED

High efficiency LED floodlights designed by Generac Mobile®.

## BATTERY PACK

The CUBE Next is equipped with a plug in/out battery pack able to power the LED floodlights in total absence of noise and carbon emissions. Once the battery is low, it can be recharged by and external power source.

## DIMMABLE POWER

The CUBE Next is equipped with a dimmer switch able to control the lamp output and manage energy consumption, application and performance.

		CUBE Next 4x150W	CUBE Next 4x300W
<b>TECHNICAL DATA</b>			
Min. dimensions (mm)	Length x Width x Height	1230 x 1160 x 2405	1230 x 1160 x 2405
Max. dimensions (mm)	Length x Width x Height	1790 x 1735 x 8400	1790 x 1735 x 8400
Dry weight (kg)		1265	1285
Avg. sound pressure	dB(A) @ 7m	0	0
Battery recharging time (h)		12	12
Battery running time (h)	@100% dimming	36	17
Lifting system	M:Manual / H:Hydraulic	H	H
Mast rotation (°)		340	340
Wind speed resistance (km/h)		110	110
Max. lamps power (W)		4 x 150	4 x 300
Lamps type		LED	LED
Max. total lumen (Lm)	@100% dimming	76500	153000
Max. illuminated area (m <sup>2</sup> )	@100% dimming	2500	4200
Inlet plug	A/V/Hz	32/220/50 - 32/240/60	32/220/50 - 32/340/60

# VT-SOLAR

The ultimate in ecology, in compact dimensions and easily transportable. The new VT-Solar lighting tower, powered by three solar panels, guarantees great brightness performance and battery life. An easy control panel and the possibility of connecting to an external power source for recharging even in the absence of sunshine, make this lighting tower a product of simple use and great ductility.



## SOLAR POWER SYSTEM

The VT-Solar combines a MPPT solar charge controller and an inverter/charger in one product. The batteries can be charged with three 300W solar panels and/or with AC power.



## MCP - MANUAL CONTROL PANEL

The MCP of the VT-Solar includes battery monitoring device, electric system alarms and protections, hour counter, lamps button, on/off switch. Options: digital timer, darkness sensor, digital controller.

### VT-Solar

TECHNICAL DATA		
Min. dimensions (mm)	Length x Width x Height	2983 x 1386 x 2474
Max. dimensions (mm)	Length x Width x Height	3514 x 3059 x 6500
Dry weight (kg)		1000
Avg. sound pressure	dB(A) @ 7m	0
Solar panels power (W)		3 x 300
Solar panels inclination angle (°)		From 0 to 45
AGM batteries (Ah)		8 x 230
Battery recharging time (h)	Solar peak or grid	6
Battery running time (h)		10
Lifting system	M:Manual / H:Hydraulic	M
Mast rotation (°)		340
Wind speed resistance (km/h)		80
Lamps power (W)		4 x 100
Lamps type		G4 LED
Total lumen (Lm)		58000
Illuminated area (m <sup>2</sup> )		2100
Inlet plug	A/V/Hz	16/220/50 - 16/240/60

# LINKTOWER

The Linktower is one of the most innovative and revolutionary models in the Generac Mobile® range. This mobile lighting tower can be powered by an external power source like a power generating set, the Mains or another lighting tower with built-in generator. Moreover, it is possible to connect in series more units to a single power source, to get a high illuminating area with very low fuel consumption.



LED version



UFO version

		Linktower LED	Linktower UFO
<b>TECHNICAL DATA</b>			
Min. dimensions (mm)	Length x Width x Height	1230 x 780 x 2180	1230 x 780 x 2420
Max. dimensions (mm)	Length x Width x Height	1870 x 1460 x 6700	1870 x 1460 x 6300
Dry weight (kg)		246	220
Lifting system	M:Manual / H:Hydraulic	M	M
Mast rotation (°)		340	340
Wind speed resistance (km/h)		80	80
Lamps power (W)		4 x 240	1 x 400
Lamps type		G4 LED	UFO LED
Total lumen (Lm)		139200	50000
Illuminated area (m <sup>2</sup> )		2800	1000
Outlet socket	A/V/Hz	16/220/50 - 16/240/60	16/220/50 - 16/240/60
Inlet plug	A/V/Hz	16/220/50 - 16/240/60	16/220/50 - 16/240/60
Max. units in series*		3	7

\* With 4mm cable section. Max. distance between units: 50m between each LED unit, 35m between each UFO unit.

# CTF 10

The perfect product for a long-term illumination of medium to large sized working areas. The CTF 10 is a very compact model: it's possible to load up to 22 units on a single truck! New version with internal control panel for protection against bad weather conditions.



**G4**  
240

**NEW**



### GENERAC® G4 LED

High efficiency LED floodlights designed by Generac Mobile®.

### LINKABLE MODEL

With the optional «Link» kit, the operator can connect different CTF 10 units to a single power source, providing an high illumination area with reduced fuel consumption.

### THE HIGHEST MODEL

Thanks to its 10 meters height mast, the CTF 10 is the highest model of the range, ensuring a very high illuminating coverage.

## CTF 10

TECHNICAL DATA			
Min. dimensions (mm)	Length x Width x Height	1150 x 1150 x 2552	
Max. dimensions (mm)	Length x Width x Height	1903 x 1903 x 10000	
Dry weight (kg)		392	
Lifting system	M:Manual / H:Hydraulic	M	
Mast rotation (°)		340	
Wind speed resistance (km/h)		80	
Lamps power (W)		4 x 240	4 x 320
Lamps type		G4 LED	LED
Total lumen (Lm)		139200	184000
Illuminated area (m <sup>2</sup> )		3800	5000
Outlet socket (option)	A/V/Hz	16/220/50 - 16/240/60	
Inlet plug	A/V/Hz	16/220/50 - 16/240/60	

# V20

The V20 is a mobile lighting tower equipped with high efficiency LED floodlights. Extended running time and one of the lowest sound pressure level in the industry, an ideal model for rental companies.



**G4**  
320



### GENERAC® G4 LED

High efficiency LED floodlights designed by Generac Mobile®.



### GTL01 DIGITAL CONTROLLER

A digital controller specifically designed to manage every function of the lighting tower for ultimate control.

**Engine note:** both EU Stage V and unregulated version available.

## V20

TECHNICAL DATA			
Min. dimensions (mm)	Length x Width x Height	2250 x 1400 x 2436	
Max. dimensions (mm)	Length x Width x Height	2640 x 1900 x 8500	
Dry weight (kg)		980	
Engine models available		Yanmar 2TNV70	Kubota Z482
Avg. sound pressure	dB(A) @ 7m	58	58
Total running time (h)		143	143
Lifting system	M:Manual / H:Hydraulic	H	
Mast rotation (°)		340	
Wind speed resistance (km/h)		110	
Lamps power (W)		4 x 320	
Lamps type		G4 LED	
Total lumen (Lm)		188160	
Illuminated area (m <sup>2</sup> )		4500	
Alternator	kVA/V/Hz	5/220/50 - 5/240/60	
Outlet socket	kVA/V/Hz	2/220/50 - 2/240/60	
Inlet plug	A/V/Hz	16/220/50 - 16/240/60	
Tank capacity (liters)		100	
Liquid containment tank (110%)	√:Yes / ●:No	√	

# V20 HYPER

The V20 Hyper is a new mobile lighting tower equipped with high-efficiency Hyper LED floodlights. Thanks to the special brackets, it's possible to point every floodlight in the direction you need. These special lamps are also available with anti-glare options.



**GENERAC® HYPER LED**  
LED floodlights placed on special brackets to point them in every direction.



**GTL01 DIGITAL CONTROLLER**

A digital controller specifically designed to manage every function of the lighting tower for ultimate control.

• **Engine note:** both EU Stage V and unregulated version available.

## V20 Hyper

TECHNICAL DATA			
Min. dimensions (mm)	Length x Width x Height	2250 x 1400 x 2436	
Max. dimensions (mm)	Length x Width x Height	2640 x 1900 x 8500	
Dry weight (kg)		980	
Engine models available		Yanmar 2TNV70	Kubota Z482
Avg. sound pressure	dB(A) @ 7m	58	58
Total running time (h)		143	143
Lifting system	M:Manual / H:Hydraulic	H	
Mast rotation (°)		340	
Wind speed resistance (km/h)		110	
Lamps power (W)		4 x 320	
Lamps type		Hyper LED	
Total lumen (Lm)		184000	
Illuminated area (m <sup>2</sup> )		4500	
Alternator	kVA/V/Hz	5/220/50 - 5/240/60	
Outlet socket	kVA/V/Hz	2/220/50 - 2/240/60	
Inlet plug	A/V/Hz	16/220/50 - 16/240/60	
Tank capacity (liters)		100	
Liquid containment tank (110%)	√:Yes / ●:No	√	

# iQ20

A mobile lighting tower equipped with a low consumption diesel engine, high-efficiency LED floodlights and a digital controller designed by Generac Mobile® for specific use on lighting towers. When equipped with the telemetry system, the iQ20 is the perfect solution for rental companies looking for a simple remote management system of their rental fleet.



**G4**  
240



### GENERAC® G4 LED

High efficiency LED floodlights designed by Generac Mobile®.



### GTL01 DIGITAL CONTROLLER

A digital controller specifically designed to manage every function of the lighting tower for ultimate control.

**Engine note:** both EU Stage V and unregulated version available.

## iQ20

TECHNICAL DATA			
Min. dimensions (mm)	Length x Width x Height	2250 x 1400 x 2436	
Max. dimensions (mm)	Length x Width x Height	2640 x 1900 x 8500	
Dry weight (kg)		880	
Engine models available		Yanmar L70N	
Avg. sound pressure	dB(A) @ 7m	68	
Total running time (h)		91	
Lifting system	M:Manual / H:Hydraulic	H	
Mast rotation (°)		340	
Wind speed resistance (km/h)		110	
Lamps power (W)		4 x 240	4 x 320
Lamps type		G4 LED	G4 LED
Total lumen (Lm)		139200	188160
Illuminated area (m <sup>2</sup> )		3200	4500
Alternator	kVA/V/Hz	5/220/50 - 5/240/60	
Tank capacity (liters)		100	
Liquid containment tank (110%)	√:Yes / ●:No	√	

# VT-MINE

A mobile lighting tower specifically developed for mining applications. Thanks to its six high-efficiency LED floodlights, the VT-Mine provides a very high illuminating capacity joined with all the LED lamp benefits. Those include robustness and low maintenance due to the absence of glass and light bulbs. A large fuel tank meets a low fuel consumption engine providing a very long running time.



## GENERAC® LED

High efficiency LED floodlights designed by Generac Mobile®.



## GTL02 DIGITAL CONTROLLER

A digital controller specifically designed to manage every function of the lighting towers with six floodlights.

### VT-Mine

TECHNICAL DATA		
Min. dimensions (mm)	Length x Width x Height	3400 x 1580 x 2330
Max. dimensions (mm)	Length x Width x Height	3400 x 1850 x 8500
Dry weight (kg)		1115
Engine models available		Kubota D1105
Avg. sound pressure	dB(A) @ 7m	65
Total running time (h)		120
Lifting system	M:Manual / H:Hydraulic	H
Mast rotation (°)		340
Wind speed resistance (km/h)		110
Lamps power (W)		6 x 320
Lamps type		LED
Total lumen (Lm)		276000
Illuminated area (m <sup>2</sup> )		5200
Alternator	kVA/V/Hz	8/220/50 - 8/240/60
Outlet socket	kVA/V/Hz	2/220/50 - 2/240/60
Tank capacity (liters)		112
Liquid containment tank (110%)	√:Yes / ●:No	√



The VMAX mobile lighting tower offers to our customers an high illuminating capacity joined with new great and unique features: 6 high-efficiency LED floodlights, liquid containment tank and reinforced frame, making this model ideal for the mining sector.



### GENERAC® LED

High efficiency LED floodlights designed by Generac Mobile®.



### MCP - MANUAL CONTROL PANEL

The MCP includes fuel level gauge, engine alarms, starting key, on/off switches for lamps and magneto-thermal cutout switch with differential relay. The GTL02 digital controller is available upon request.

## VMAX

TECHNICAL DATA		
Min. dimensions (mm)	Length x Width x Height	2430 x 1130 x 2450
Max. dimensions (mm)	Length x Width x Height	2430 x 2190 x 8000
Dry weight (kg)		760
Engine models available		Kubota D1105
Avg. sound pressure	dB(A) @ 7m	63
Total running time (h)		104
Lifting system	M:Manual / H:Hydraulic	M
Mast rotation (°)		340
Wind speed resistance (km/h)		110
Lamps power (W)		6 x 320
Lamps type		LED
Total lumen (Lm)		276000
Illuminated area (m <sup>2</sup> )		5200
Alternator	kVA/V/Hz	8/220/50 - 8/240/60
Outlet socket	kVA/V/Hz	3/220/50 - 3/24/60
Tank capacity (liters)		110
Liquid containment tank (110%)	√:Yes / •:No	√

# MT1

The smallest mobile lighting tower of the range equipped with built-in generator, the MT1 is the ideal solution for illuminating small to medium sized working areas. Also available in «UFO» LED configuration.



LED version



UFO version

**Engine note:** both EU Stage V and unregulated version available.

		MT1 LED	MT1 RT-UFO
<b>TECHNICAL DATA</b>			
Min. dimensions (mm)	Length x Width x Height	1100 x 1180 x 1900	2482 x 1318 x 2500
Max. dimensions (mm)	Length x Width x Height	1638 x 2080 x 5300	2482 x 2280 x 5500
Dry weight (kg)		335	455
Engine models available		Yanmar L70N	Yanmar L70N
Avg. sound pressure	dB(A) @ 7m	67	67
Total running time (h)		18	18
Lifting system	M:Manual / H:Hydraulic	M	M
Wind speed resistance (km/h)		80	80
Lamps power (W)		4 x 240	1 x 400
Lamps type		G4 LED	UFO LED
Total lumen (Lm)		139200	50000
Illuminated area (m <sup>2</sup> )		2500	850
Alternator	kVA/V/Hz	5/220/50 - 5/240/60	5/220/50 - 5/240/60
Outlet socket	kVA/V/Hz	2/220/50 - 2/240/60	2/220/50 - 2/240/60
Tank capacity (liters)		17	17
Liquid containment tank (110%)	√:Yes / ●:No	√	√
Standard trailer		Hand trolley	Road trailer

# MT2

One of the smallest mobile lighting towers of the Generac Mobile® range, the MT2 is equipped with high-efficiency LED floodlights and a built-in generating set available in different versions. This model is equipped with a hand trolley for easy transportation.



P4500 version



### GENERAC® G4 LED

High efficiency LED floodlights designed by Generac Mobile®.

### EASY HANDLING

The front steering handle combined with four wheels and a light weight ensure a large turning radius and easy transportation by only one operator.

**Engine note:** both EU Stage V and unregulated version available (50 Hz only).

		MT2 P	MT2 Y	MT2 PX	MT1 Empty
<b>TECHNICAL DATA</b>					
Min. dimensions (mm)	Length x Width x Height	1250 x 1060 x 1890	1250 x 1060 x 1890	1250 x 1060 x 1890	1250 x 1060 x 1890
Max. dimensions (mm)	Length x Width x Height	1460 x 1400 x 5200	1460 x 1400 x 5200	1460 x 1400 x 5200	1460 x 1400 x 5200
Dry weight (kg)		265	315	295	216
Generator model available		P3500	P4500	PX5000	-
Engine model		Pramac LC170F-3	Yanmar L70N	Pramac SR188F	-
Avg. sound pressure	dB(A) @ 7m	66	68	69	-
Total running time (h)	@75% PRP	6	16	19	-
Lifting system	M:Manual / H:Hydraulic	M	M	M	M
Wind speed resistance (km/h)		80	80	80	80
Lamps power (W)		4 x 240	4 x 240	4 x 240	4 x 240
Lamps type		G4 LED	G4 LED	G4 LED	G4 LED
Total lumen (Lm)		139200	139200	139200	139200
Illuminated area (m <sup>2</sup> )		2500	2500	2500	2500
Alternator	kVA/V/Hz LTP	3.3/220/50*	4.1/220/50*	4.2/220/50*	-
CEE outlet socket	A/V/Hz	n.a.	32/220/50*	16/220/50*	-
Schuko outlet socket	A/V/Hz	16/220/50*	16/220/50*	16/220/50*	-
Tank capacity (liters)		9	18	27	-

\*Please check 60 Hz version availability with local dealer or subsidiary.

The lighting power of high-efficiency LED floodlights meets a very narrow canopy design, evolving the new VTevo into the most compact and eco-friendly lighting tower ever created! VTevo will help you to skimp up to 75% of fuel and protect our environment with a reduction in carbon emissions up to 10 Ton per year, compared to a traditional lighting tower with metal halide lamps.



**G4**  
320



### GENERAC® G4 LED

High efficiency LED floodlights designed by Generac Mobile®.



### MCP - MANUAL CONTROL PANEL

The MCP\* includes fuel level gauge, engine alarms, starting key, on/off switches for lamps and magneto-thermal cutout switch with differential relay. The GTL01 digital controller is available upon request.

\*Data and photo are for illustrative purpose only. Features may change without prior notice.

**Engine note:** both EU Stage V and unregulated version available.

## VTevo

### TECHNICAL DATA

Min. dimensions (mm)	Length x Width x Height	2480 x 1190 x 2450		
Max. dimensions (mm)	Length x Width x Height	2480 x 2400 x 8000		
Dry weight (kg)		650		
Engine models available		Yanmar L70N*	Yanmar 2TNV70	Kubota Z482
Avg. sound pressure	dB(A) @ 7m	66	59	59
Total running time (h)		200	171	171
Lifting system	M:Manual / H:Hydraulic	M		
Mast rotation (°)		340		
Wind speed resistance (km/h)		80		
Lamps power (W)		4 x 320		
Lamps type		G4 LED		
Total lumen (Lm)		188160		
Illuminated area (m <sup>2</sup> )		4500		
Alternator	kVA/V/Hz	3.5/220/50 - 4.5/240/60		
Outlet socket	kVA/V/Hz	2/220/50 - 2/240/60		
Tank capacity (liters)		120		
Liquid containment tank (110%)	√:Yes / •:No	√		

\*Not globally available. Please check with local dealer or subsidiary.

# VTevoQ

A very compact lighting tower installed on zinc-coated base and equipped with digital controller, high-efficiency LED lamps and safety features like bumpers and manual locking winch. This model is ideal for use during outdoor events.



**G4**  
320

**NEW**



### GENERAC® G4 LED

High efficiency LED floodlights designed by Generac Mobile®.



### GTL01 DIGITAL CONTROLLER

A digital controller specifically designed to manage every function of the lighting tower for ultimate control.

**Engine note:** both EU Stage V and unregulated version available.

## VTevoQ

TECHNICAL DATA			
Min. dimensions (mm)	Length x Width x Height	2480 x 1190 x 1950	
Max. dimensions (mm)	Length x Width x Height	2480 x 2400 x 7500	
Dry weight (kg)		630	
Engine models available		Yanmar 2TNV70	Kubota Z482
Avg. sound pressure	dB(A) @ 7m	63	63
Total running time (h)		171	171
Lifting system	M:Manual / H:Hydraulic	M	
Mast rotation (°)		340	
Wind speed resistance (km/h)		80	
Lamps power (W)		4 x 320	
Lamps type		G4 LED	
Total lumen (Lm)		188160	
Illuminated area (m <sup>2</sup> )		4500	
Alternator	kVA/V/Hz	5/220/50 - 5/240/60	
Outlet socket	kVA/V/Hz	2/220/50 - 2/240/60	
Inlet plug	A/V/Hz	16/220/50 - 16/240/60	
Tank capacity (liters)		120	
Liquid containment tank (110%)	√:Yes / ●:No	√	

Compact footprint and ease of use are two main features that make the VT8 lighting tower one of the top models in the Generac Mobile® range. High performance balanced with cost-effectiveness allowed the VT8 to become the best seller traditional model in the International market.



### METAL HALIDE

The traditional 4x1000W powerful metal halide lamps are able to provide a perfect illumination by night or with bad weather conditions, even in big working areas.



### MCP - MANUAL CONTROL PANEL

The MCP includes fuel level gauge, engine alarms, starting key, on/off switches for lamps and magneto-thermal cutout switch with differential relay.

## VT8

### TECHNICAL DATA

Min. dimensions (mm)	Length x Width x Height	2650 x 1300 x 2460
Max. dimensions (mm)	Length x Width x Height	2650 x 2460 x 8000
Dry weight (kg)		716
Engine models available		Kubota D1105
Avg. sound pressure	dB(A) @ 7m	68
Total running time (h)		44
Lifting system	M:Manual / H:Hydraulic	M
Mast rotation (°)		340
Wind speed resistance (km/h)		110
Lamps power (W)		4 x 1000
Lamps type		Metal Halide
Total lumen (Lm)		360000
Illuminated area (m <sup>2</sup> )		4200
Alternator	kVA/V/Hz	8/220/50 - 8/240/60
Outlet socket	kVA/V/Hz	3/220/50 - 3/240/60
Tank capacity (liters)		75

# CUBE SUPER

The CUBE Super by Generac Mobile® is a lighting tower installed on zinc-coated base with a special bolded frame increasing resistance to vibrations, wear and rust. Features like compact shape, high-efficiency LED floodlights and safe locking stabilizers make this model ideal for rental companies.



**G4**  
320

**NEW**



### GENERAC® G4 LED

High efficiency LED floodlights designed by Generac Mobile®.



### GTL01 DIGITAL CONTROLLER

A digital controller specifically designed to manage every function of the lighting tower for ultimate control.

**Engine note:** both EU Stage V and unregulated version available.

## CUBE Super

TECHNICAL DATA			
Min. dimensions (mm)	Length x Width x Height	1230 x 1160 x 2405	
Max. dimensions (mm)	Length x Width x Height	1790 x 1735 x 8400	
Dry weight (kg)		1005	
Engine models available		Yanmar 2TNV70	Kubota Z482
Avg. sound pressure	dB(A) @ 7m	58	58
Total running time (h)		243	243
Lifting system	M:Manual / H:Hydraulic	H	
Mast rotation (°)		340	
Wind speed resistance (km/h)		110	
Lamps power (W)		4 x 320	
Lamps type		G4 LED	
Total lumen (Lm)		188160	
Illuminated area (m <sup>2</sup> )		4500	
Alternator	kVA/V/Hz	5/220/50 - 5/240/60	
Outlet socket	kVA/V/Hz	2.5/220/50 - 2.5/240/60	
Inlet plug	A/V/Hz	16/220/50 - 16/240/60	
Tank capacity (liters)		170	
Liquid containment tank (110%)	√:Yes / ●:No	√	

# CUBE HYPER

The CUBE Hyper is a special version of the best-seller CUBE Super model, where the traditional LED floodlights have been replaced with the new HYPER LED head allowing the operator to arrange every floodlight in the preferred position to provide up to 360° illumination. Also available with anti-glare kit.



## GENERAC® HYPER LED

LED floodlights placed on special brackets to point them in every direction.



## GTL01 DIGITAL CONTROLLER

A digital controller specifically designed to manage every function of the lighting tower for ultimate control.

**Engine note:** both EU Stage V and unregulated version available.

### CUBE Hyper

TECHNICAL DATA			
Min. dimensions (mm)	Length x Width x Height	1230 x 1160 x 2420	
Max. dimensions (mm)	Length x Width x Height	1790 x 1735 x 8400	
Dry weight (kg)		1005	
Engine models available		Yanmar 2TNV70	Kubota Z482
Avg. sound pressure	dB(A) @ 7m	58	58
Total running time (h)		243	243
Lifting system	M:Manual / H:Hydraulic	H	
Mast rotation (°)		340	
Wind speed resistance (km/h)		110	
Lamps power (W)		4 x 320	
Lamps type		Hyper LED	
Total lumen (Lm)		184000	
Illuminated area (m <sup>2</sup> )		4500	
Alternator	kVA/V/Hz	5/220/50 - 5/240/60	
Outlet socket	kVA/V/Hz	2.5/220/50 - 2.5/240/60	
Inlet plug	A/V/Hz	16/220/50 - 16/240/60	
Tank capacity (liters)		170	
Liquid containment tank (110%)	√:Yes / ●:No	√	



# HYDRO POWER BOX 360 - HYPER

A very special lighting tower, specifically developed for applications with high risk of tampering or damaging, provides a concrete vandalism-proof solution. The redesigned Hydro Power Box is devoid of protruding profiles to avoid any risk of injury even when used during crowded events. The lighting system and the control panel are entirely enclosed within the machine by a casing with locks; access to mast is restricted to authorized people only. An ideal solution for live events, concerts, rallies or public events.



**GENERAC® HYPER LED**  
LED floodlights placed on special brackets to point them in every direction.



**GTL01 DIGITAL CONTROLLER**  
A digital controller specifically designed to manage every function of the lighting tower for ultimate control.

• **Engine note:** both EU Stage V and unregulated version available.

Hydro Power Box 360 - Hyper

TECHNICAL DATA			
Min. dimensions (mm)	Length x Width x Height	1150 x 1150 x 2500	
Max. dimensions (mm)	Length x Width x Height	1150 x 1150 x 8400	
Dry weight (kg)		1298	
Engine models available		Yanmar 2TNV70	Kubota Z482
Avg. sound pressure	dB(A) @ 7m	58	58
Total running time (h)		378	378
Lifting system	M:Manual / H:Hydraulic	H	
Mast rotation (°)		340	
Wind speed resistance (km/h)		80	
Lamps power (W)		4 x 320	
Lamps type		Hyper LED	
Total lumen (Lm)		184000	
Illuminated area (m <sup>2</sup> )		4500	
Alternator	kVA/V/Hz	5/220/50 - 5/240/60	
Outlet socket	kVA/V/Hz	2.5/220/50 - 2.5/240/60	
Inlet plug	A/V/Hz	16/220/50 - 16/240/60	
Tank capacity (liters)		265	
Liquid containment tank (110%)	√:Yes / ●:No	√	

# SPECIAL LIGHTING TOWERS

Generac Mobile® does take requests for specially designed models and will evaluate the viability of those requests on a case-by-case basis. Also available are a range of alternative products, such as lighting towers with double telescopic mast, extended height masts up to 20 metres and models placed on vehicles, skids or other special trailers.



# MAIN OPTIONS



**110 V electric sockets**

Every 230V inlet plug and outlet socket installed on the machine is replaced with 110V version.



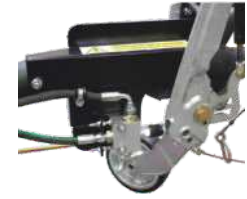
**Additional outlet socket**

An outlet socket (16A 230V) additional to the one already installed on the frontal panel.



**Shut-off valve**

An air intake shut-off valve for automatically turning off the diesel engine when overrunning.



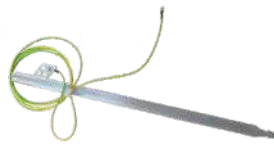
**AMOSS kit**

The AMOSS kit automatically lowers the lighting tower mast when handbrake is released.



**Digital timer**

A digital programmable timer to automatically turn on/off the floodlights.



**Earth picket**

A grounding system including a 5 meters cable and a metal picket to be planted into the ground.



**Electric tilting system**

A system to let the operator tilt the floodlights from the control panel without lowering the mast.



**Hot-dip zinc coating of the mast**

A process of dipping the mast steel sections into molten zinc to provide a distinct advantage over corrosion.



**Main/generator selector switch**

A manual switch to select the power source of the floodlights between the integrated power generator or an external power source.



**Hitches**

Three different types of hitch to be installed on the trailer (suggested for road trailers): 50mm ball hitch; 50mm eyelet hitch; 60mm eyelet hitch.



**Insulation monitoring device**

A grounding system that disconnects the power supply when the resistance between the two conductors drops below the set value.



**Darkness sensor**

A sensor able to detect the environmental light to automatically turn on/off the floodlights.



**Pre-heating system**

A system to heat the engine before starting. Suggested for cold environments.



**Trailers**

Our lighting towers can be available with different types of site and road trailers. Please refer to the Trailers page for further details.

**Other options available:**

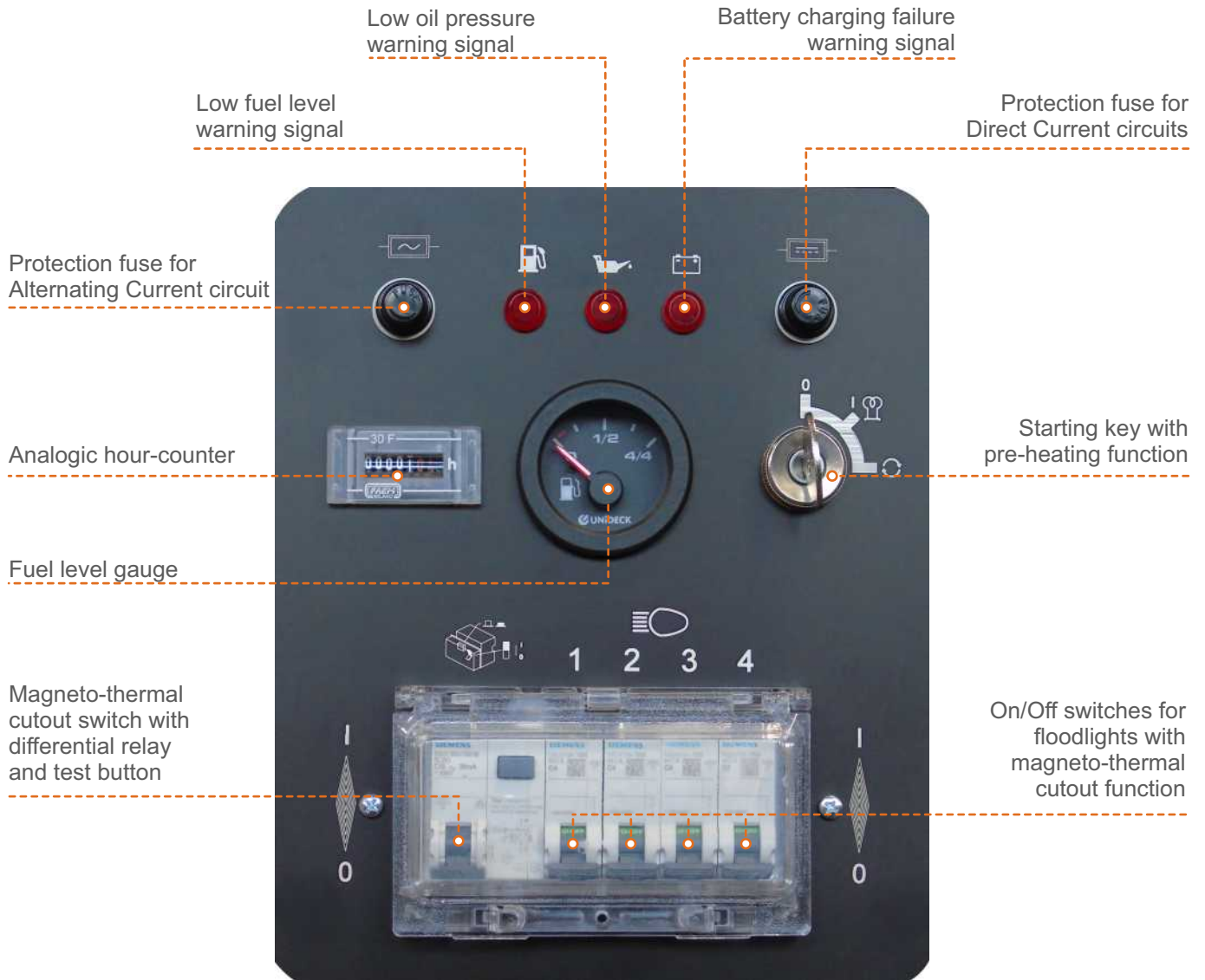
- Certified spark arrestor
- Electric winch
- Additional spare tire with support
- Documents for road registration (EU)
- Plastic box for documents
- Second year of warranty
- Low voltage kit
- Zinc coated base
- Customized colour
- Telemetry system
- Remote emergency stop controller

Generac Mobile® does take requests for other options not listed in this page and will evaluate the viability of those requests on a case-by-case basis.

# MCP - MANUAL CONTROL PANEL

The lighting tower models by Generac Mobile® that are not equipped with a digital controller, are always equipped with the MCP<sup>1</sup>, a Manual Control Panel able to manage all the functions of the machine.

These lighting towers can be equipped with different kind of Manual Control Panels with different features depending on specific model of the unit and the equipped engine.



Discover more about MCP:



<sup>1</sup>Data and photo are for illustrative purpose only. Features may change without prior notice.

# GTL01 DIGITAL CONTROLLER

Generac Mobile® engine-driven lighting towers with four floodlights can be equipped with the digital control panel GTL01 that allows the operator to interact with the unit ensuring proper control functionalities and electrical protections in compliance with measures of protection for safety. Featured circuit breakers and toggles work in synergy with the digital controller, that has been directly designed and developed by Generac Mobile®. This is specifically committed to supervise and to manage all the functions of the lighting tower.

## DIGITAL CONTROL PANEL MAIN FEATURES:

### Protections and toggles:

#### Protections:

- RCBO: Residual-Current Circuit Breaker with Overcurrent protection
- MCB: Magnetothermic Circuit Breakers
- Fuses

#### Toggles:

- Generator/Mains switch<sup>1</sup>
- Mast control
- Emergency stop button



### Operator menu:

- Event list
- Schedule time settings
- Darkness sensor settings
- Language selection
- Date and Clock adjustment
- Display brightness / contrast adjustment
- Light hours counter
- Maintenance reset
- Time to next maintenance

### Alarms:

#### Engine alarms:

- Low oil pressure
- Battery charger fault
- High coolant temperature
- Low fuel level
- Fail to start
- Fail to stop
- Emergency stop<sup>1</sup>
- External shutdown<sup>1</sup>

#### Generator alarms:

- Over voltage
- Over frequency
- Under voltage
- Under frequency

### GTL01 DIGITAL CONTROLLER

Through the digital controller, the operator can easily and quickly manage all commands and tasks of the lighting tower with four floodlights.

AUTO control mode settings (in case of darkness sensor and/or timer options) are directly accessible via GTL operator Menu.

This powerful controller is the all-in-one "smart - mind" of the lighting tower.

### Alarm/Event list:

- Generator voltage
- Generator frequency
- Data and real-time clock
- Engine running hours
- Engine status
- Maintenance request
- Control Model enabled
- Active alarm indication
- Fuel level

Discover more about  
GLT01:



<sup>1</sup>Option available upon request.

# GTL02 DIGITAL CONTROLLER

Generac Mobile® engine-driven lighting towers with six floodlights can be equipped with the digital control panel GTL02 that allows the operator to interact with the unit ensuring proper control functionalities and electrical protections in compliance with measures of protection for safety. Featured circuit breakers and toggles work in synergy with the digital controller, that has been directly designed and developed by Generac Mobile®. This is specifically committed to supervise and to manage all the functions of the lighting tower.

## DIGITAL CONTROL PANEL MAIN FEATURES:

### Protections and toggles:

#### Protections:

- RCBO: Residual-Current Circuit Breaker with Overcurrent protection
- MCB: Magnetothermic Circuit Breakers
- Fuses

#### Toggles:

- Generator/Mains switch<sup>1</sup>
- Mast control
- Emergency stop button



### Operator menu:

- Event list
- Schedule time settings
- Darkness sensor settings
- Language selection
- Date and Clock adjustment
- Display brightness / contrast adjustment
- Light hours counter
- Maintenance reset
- Time to next maintenance

### Alarms:

#### Engine alarms:

- Low oil pressure
- Battery charger fault
- High coolant temperature
- Low fuel level
- Fail to start
- Fail to stop
- Emergency stop<sup>1</sup>
- External shutdown<sup>1</sup>

#### Generator alarms:

- Over voltage
- Over frequency
- Under voltage
- Under frequency

### GTL02 DIGITAL CONTROLLER

Through the digital controller, the operator can easily and quickly manage all commands and tasks of the lighting tower with six floodlights.

AUTO control mode settings (in case of darkness sensor and/or timer options) are directly accessible via GTL operator Menu.

This powerful controller is the all-in-one "smart - mind" of the lighting tower.

### Alarm/Event list:

- Generator voltage
- Generator frequency
- Data and real-time clock
- Engine running hours
- Engine status
- Maintenance request
- Control Model enabled
- Active alarm indication
- Fuel level

Discover more about  
GLT02:



<sup>1</sup>Option available upon request.

# TELEMETRY SYSTEM

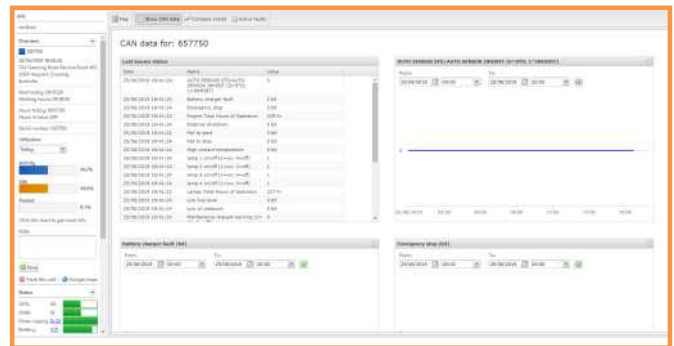
All the Generac Mobile® lighting towers equipped with a GTL digital controller are available with the Telemetry System option.

Generac Mobile® offers to the customers the opportunity to remotely manage their entire fleet of lighting towers by checking in real time their position (via GPS) and the status of engine, battery, lamps and so on. Through the Telemetry System it is also possible to set warning alarms to activate when the unit is moved and track it via GPS. Finally, the Telemetry System can automatically advise the fleet manager everytime maintenance is required.

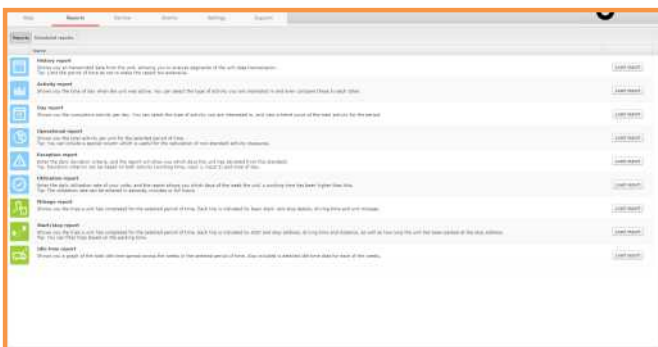
Through an optional feature, the operator can also turn on and off the engine remotely, a very useful function especially when there is a high number of lighting towers or they are placed far from the operators.



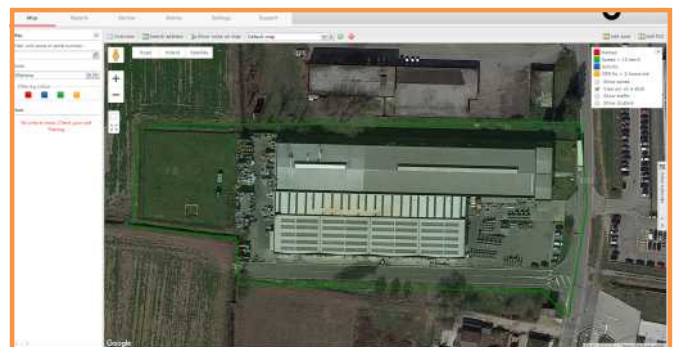
You will just need a device connected to the Internet line to track and manage all your lighting towers all over the world!



Check the on/off status of engine, lamps and alarms, as well as other data including fuel level and utilization percentage. All data will be made available on your device whenever you need it.



Check daily reports on your fleet and receive an email message everytime one of your units requires a programmed maintenance.



Set different kind of warning alarms to prevent thefts and unauthorized usage, and track your units when lost.

# TRAILERS



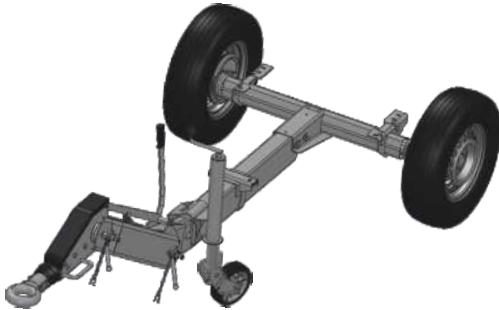
**Road trailer type A**

Straight tow-bar with height adjustable jockey wheel, hand brake, inertia brakes, parking brake and back lights. Available with eyelet hitch or ball hitch.



**Road trailer type B**

Foldable tow-bar with height adjustable jockey wheel, hand brake, inertia brakes, parking brake and back lights. Available with eyelet hitch or ball hitch.



**Road trailer type C**

Adjustable tow-bar with height adjustable jockey wheel, hand brake, inertia brakes, parking brake and back lights. Available with eyelet hitch or ball hitch.



**Road trailer type CM**

Adjustable tow-bar with height adjustable jockey wheel, hand brake, inertia brakes, parking brake and back lights. Available with eyelet hitch or ball hitch.



**Road trailer type D**

Short straight tow-bar with height adjustable jockey wheel, hand brake, inertia brakes, parking brake and back lights. Available with eyelet hitch or ball hitch.



**Road trailer type E**

Straight tow-bar with height adjustable jockey wheel, hand brake, inertia brakes, parking brake and back lights. Available with eyelet hitch or ball hitch.



# TRAILERS



**Straight site trailer**

Straight tow-bar with height adjustable stabilizer. No brakes. Eyelet hitch only. Max. speed: 30 km/h



**Foldable site trailer**

Foldable tow-bar with height adjustable stabilizer. No brakes. Eyelet hitch only. Max. speed: 30 km/h

	Road Type A	Road Type B	Road Type C	Road Type CM	Road Type D	Road Type E	Site Straight	Site Foldable	Hand Trolley
<b>TABLE OF TRAILERS</b>									
VT-Hybrid	√	■	■	⊙	⊙	⊙	⊙	⊙	⊙
VTS	■	■	■	■	⊙	⊙	⊙	√	⊙
V20	■	■	⊙	■	√	⊙	⊙	■	⊙
V20 Hyper	■	■	⊙	■	√	⊙	⊙	■	⊙
iQ20	■	■	⊙	■	√	⊙	⊙	■	⊙
VT-Mine	√	■	■	⊙	⊙	⊙	⊙	⊙	⊙
VTevo	■	■	⊙	■	⊙	⊙	√	⊙	⊙
VMAX	⊙	⊙	⊙	■	⊙	⊙	√	⊙	⊙
VT8	■	⊙	⊙	⊙	⊙	⊙	√	⊙	⊙
Linktower	⊙	⊙	⊙	⊙	⊙	⊙	⊙	⊙	√
MT1	⊙	⊙	⊙	⊙	⊙	■	⊙	⊙	√
MT2	⊙	⊙	⊙	⊙	⊙	⊙	⊙	⊙	√

## Legend:

- √ Installed as standard
- Option to be installed if requested
- ⊙ Not available for this model

## AMOSS kit



The AMOSS kit is an optional security feature to be connected to the handbrake and available for every mobile lighting tower equipped with any road trailer. It has two functions:

- 1) When the handbrake is released and the mast of the lighting tower is lowered, it is not possible to raise it.
- 2) When the handbrake is released and the mast is raised, it automatically lowers completely.

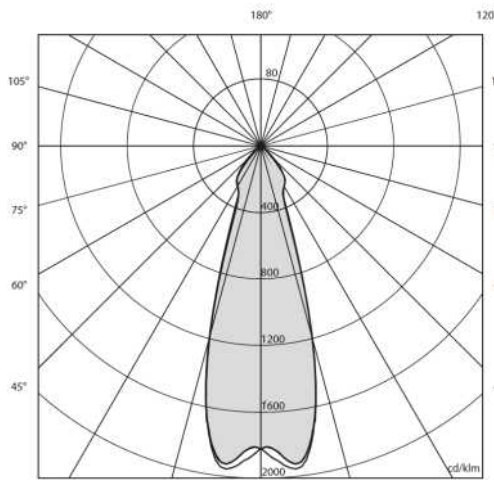
This feature can increase the safety of the lighting tower, preventing accidental damages suffered by things or people as a result of improper use or negligence of the operator.

# CERTIFICATIONS



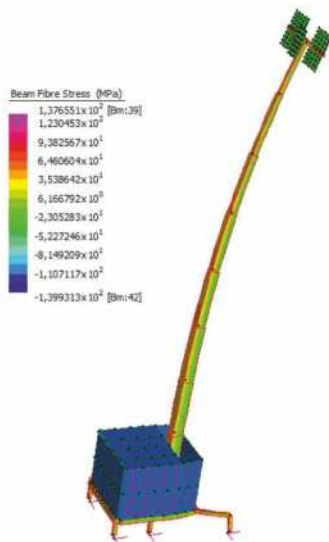
## ISO 9001:2015

Generac Mobile® has implemented and maintains a management system for the design and manufacturing which fulfills the requirements of the ISO 9001:2015 / Quality Management System standards. This certification has been issued by a third-party independent authority.



## ILLUMINATED AREA

The lighting towers manufactured by Generac Mobile® are equipped with floodlights of different type and wattage; each of them has been tested by a third-party independent authority to officially certify the luminous power.



## WIND SPEED STABILITY

All the lighting towers manufactured by Generac Mobile® have a specific resistance to the wind speed, that is guaranteed only under a correct installation of the machine by following the instructions described on the user manual. The wind speed stability certifications have been issued by a third-party independent authority.

All the certifications are available on request. For further information please contact us at [gmp.srl@generac.com](mailto:gmp.srl@generac.com)

# APPLICATIONS



DISTRIBUTOR:



**Generac Mobile Products Srl**  
Part of Generac Power Systems, Inc.  
Via Stazione, 3 bis - 27030 Villanova d'Ardenghi (PV) - Italy  
Tel +39.0382.567011 - gmp.srl@generac.com  
www.generacmobile.com